



The Colorado Health Foundation™



We believe health and well-being can be in reach for everyone.

So we collaborate with organizations and communities in Colorado to break down systemic inequalities that stand in the way of our health.

[Connect With Us](#)

Ballot Measures

2024 Local Ballot Measure Tracker

It's Live!

Gain insight into the issues in your community or to track issues statewide. The tracker is updated as new ballot measures are proposed and decided by voters.

[Access Tracker](#)

1/3

Summary Report

Policymaking Processes: Administrative Rulemaking

This report presents opportunities for our state to consider changes to administrative rulemaking that could make the process more equitable for all Coloradans.

[Read Now](#)

2/3

Poll Results

Pulse: The Colorado Health Foundation Poll

The 2023 results are in!

Explore our interactive dashboard to better understand the priorities of Coloradans on a range of important health issues in 2023.

[View Results](#)

3/3



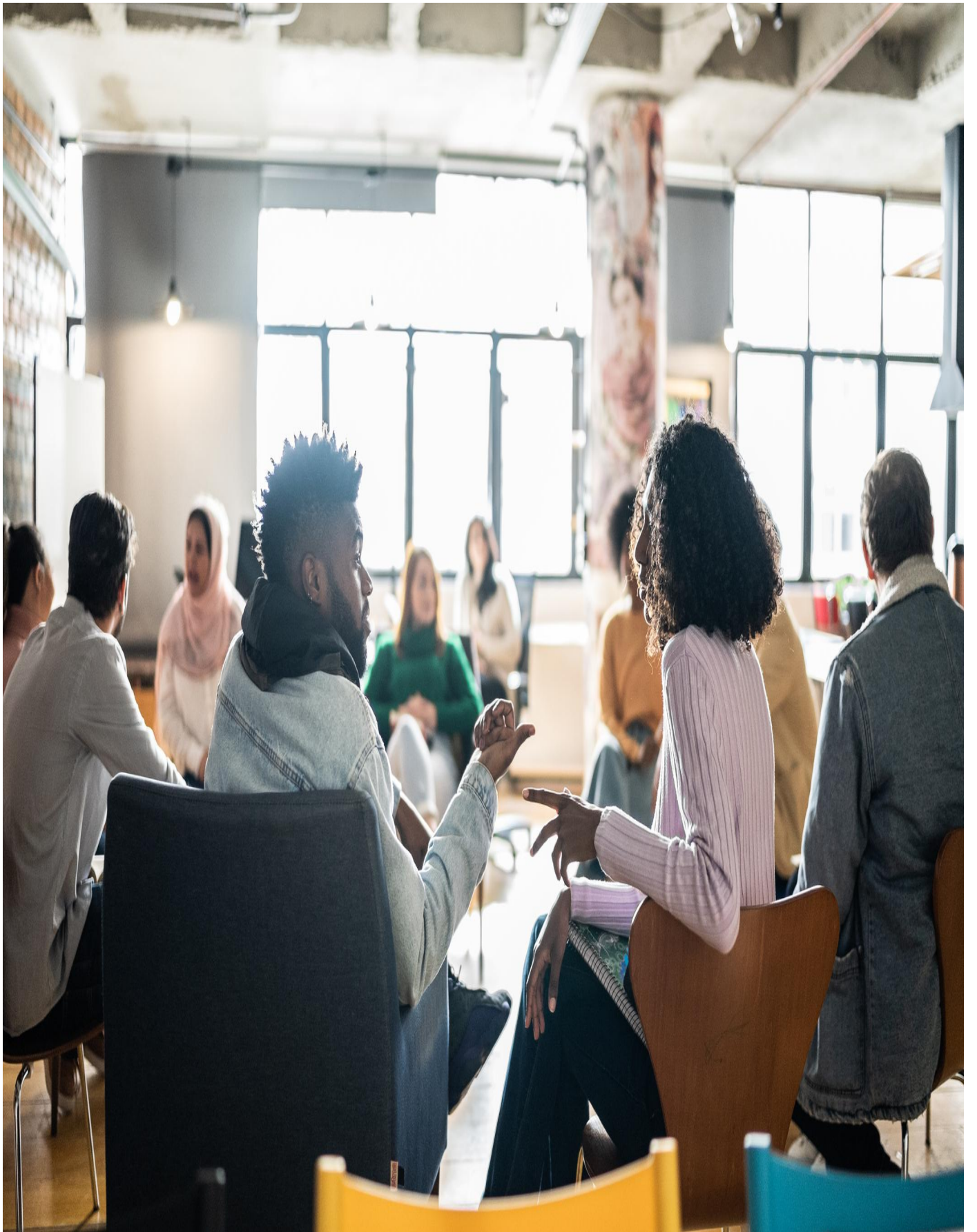
Funding

We fund organizations that are working to advance health equity and racial justice across Colorado. Learn more about our funding types, eligibility, application processes and deadlines.



Equity & Justice

We collaborate with organizations to break down systemic barriers to achieving health equity and racial justice. Learn why we prioritize communities of color in all that we do.



Our Priorities

We have chosen 10 priority areas where we can make a real difference in the health of Coloradans. Learn why these priorities are so important to health equity and racial justice.



Policy Advocacy

We work closely with advocates and policymakers across the state to advance public policies that align with our 10 priority areas. Learn more about our policy agenda.



Pulse Poll

We believe in listening, first. Through our annual Pulse Poll, we get the perspectives of adults across the state on a range of health issues. Learn how we use it to inform policy.



Sustainable Development Goals

Category	Value	Target	Progress
Carbon	120,000	100,000	120%
Water	50,000	50,000	100%
Waste	30,000	30,000	100%
Energy	80,000	80,000	100%
Greenhouse Gas	150,000	150,000	100%



Studies & Reports

We engage in research and analyses to expand how we think about health and understand which solutions have lasting impact. Browse or download the Foundation's studies and reports.

More Ways to Engage with Us



Events



Programs



Announcements



